

# PAD PRINTING ACCESSORIES



**Plates & Screened Films • Polymer Plate Manufacturing • Accessories for Ink & Ink Cups • Cleaning • Miscellaneous**

## Plates & Screened Films

### Polymer Plates

- Printjet water washable  
unpunched: I17, punched: L17
- Standard alcohol washable  
unpunched: B17, punched: P17
- Longlife water washable  
unpunched: W52, punched: X52
- Longlife alcohol washable  
unpunched: K52, punched: G52

### Steel Plates

- Outer dim. toleranced: C98, C78, C58
- Outer dim. untoleranced: C10, C08, C06
- Sealed Ink Well System: C99
- Chrome Steel Plate (suitable for combined magnetic plate):  
A98 (single sided coating)  
M98 (no coating)

### Thin Steel Plates

unpunched: D05, punched: N05

**When ordering:** please state plate size as W x D (Width x Depth), e. g. polymer plate Printjet, water washable, unpunched (I17) - for Open Ink Well System, size 250 x 100 mm:  
# I17 250 100

### Screened Films for Polymer Plates

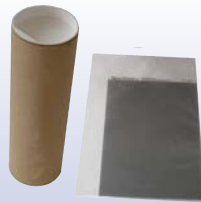
120 lines / cm

- E7812, 130 x 180 mm: # 90 00 23
- E7812, 166 x 600 mm: # 90 00 24
- (E7812, 300 x 300 mm: # 90 00 33)\*
- (E7812, 650 x 200 mm: # 58257 0001)\*

80 lines / cm

- Film for transferring higher ink quantities
- D7580, 130 x 180 mm: # 90 00 21
- D7580, 166 x 600 mm: # 90 00 22

\* = not stocked, available on request



### Screened Films for Steel Plates

80 lines / cm

- K 448, 130 x 180 mm: # 90 00 25
- K 448, 166 x 600 mm: # 90 00 26

### Screened Films for Thin Steel Plates

80 lines / cm

- F6380, 130 x 180 mm: # 90 00 27
- F6380, 166 x 600 mm: # 90 00 28
- N 258, 130 x 180 mm: # 90 00 31
- (N 258, 140 x 500 mm: # 90 00 34)\*
- (N 258, 166 x 600 mm: # 90 00 32)\*

\* = not stocked, available on request

## Polymer Plate Manufacturing

### Developer Tray

All measurements L x W

#### AS 160 - small: # 90 01 30

Inside dimensions: 250 x 150 mm

#### AS 350 - medium: # 90 01 32

Inside dimensions: 439 x 389 mm

#### AS 500 - big: # 90 01 31

Inside dimensions: 189 x 619 mm

Each developer tray includes  
1 magnetic foil

#### Spare magnetic foils for developer trays (1 piece):

- for AS 160: # 728 902 020
- for AS 350: # 728 902 054
- for AS 500: # 728 902 019

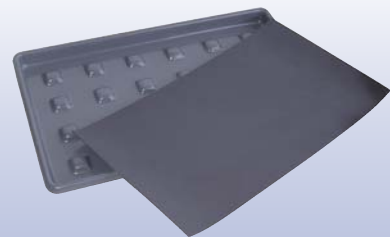


Photo: AS 160 with magnetic foil

### Plush cloth rubber

L x W x H = 130 x 75 x 30 mm

# 90 01 40

(1 rubber incl. 1 plush cloth)

#### Spare plush cloth

L x B = 220 x 75 mm:

# 90 01 11 (1 piece)



### Wash-out Solvent

For alcohol washable  
polymer plates

# 90 01 50  
(1 l can)

