

# Polymer Plates

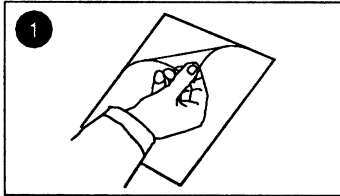
## Standard & Long-Life Polymer Plates

For small to medium-sized printing runs, polymer printing plates are used which, with careful handling, permit several thousand printing operations.

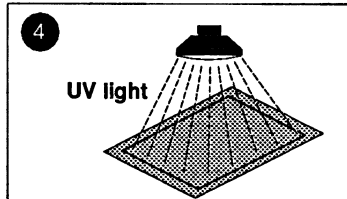
Teca-Print AG recommends the standard printing plates for small runs, and the long-life printing plates for medium-sized runs.

Alcohol-washable and water washable plates can be delivered ex-stock, whereby the latter represent the future in this area.

You will find the processing data in the table overleaf.



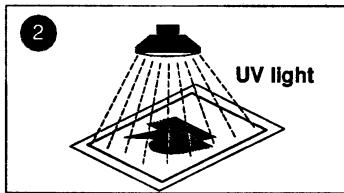
Remove protective sheet.



Expose plate under screen film.

7

Re-expose in the BG or in the TS.



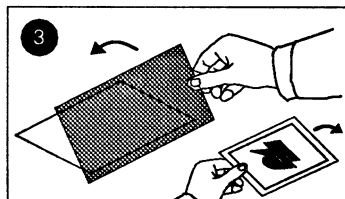
Place the delustered positive film with the coating downwards, evacuate and expose.



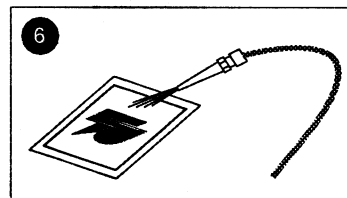
Wash plate.

8

Drying in TS or oven at the prescribed temperature



Remove positive film, place dotted screen film in position with coating downwards, and evacuate.



Dry the plate with compressed air jet.

Screen for polymer-plate	
Designation:	E 7812
Dimensions:	130 x 180 mm Art.-No.: 90 00 23
Dimensions:	166 x 600 mm Art.-No.: 90 00 24

# Polymer Plates

## Standard & Long-Life Polymer Plates

# Polymer plate – Technical data

		Water washable I 17 ... ..					Washable with alcohol B 17 ... ..				
		351 min sec	25/30 min sec	35/50 min sec	35/100 min sec	600 P min sec	351 min sec	25/30 min sec	35/50 min sec	35/100 min sec	600 P min sec
<b>Standard plate</b>	Exposure unit BG.... :										
	Exposure time: Rollfilm Exposure time: Screenfilm	1.00 1.00	1.30 1.30	1.30 1.30	1.30 1.30	6.00 6.00	1.00 1.00	1.30 1.30	1.30 1.30	1.30 1.30	3.00 3.00
	Wash out with HAW:	Wash out for 1.0 min. Water temp: 15...20/ max. 25° C					1.0 min.				
	Re-expose and dry or: Re-expose, and then dry in the oven	30 min. at 60° C in the TS  5 min. in the BG 30 min., at 60° C					>30 min. at 80° C in the TS  5 min. in the BG 30 min., at 80° C				
<b>Long-Life plate</b>	Exposure unit BG.... :										
	Exposure time: Roll-film Exposure time: Screen-film	0.40 0.40	0.40 0.40	0.40 0.40	0.40 0.40	----- -----	1.00 1.00	2.00 2.00	2.30 2.30	2.30 2.30	----- -----
	Wash with HAW:	2.30 min.					1.0 min.				
	Re-expose, and then dry in the oven	10 min. in the BG or in the TS 30 min., at 100°C					10 min. in the BG or in the TS 30 min., at 120°C				

The processing of our printing plates must take place away from daylight.

**Room lighting:** Yellow light, darkroom

**Film:** Use a matt film! Matt coated face downwards.

**Screen film:** We recommend our E7812 screen.

**Storage:** At 20 - 22 °C and 60% relative humidity

Exposure unit fitted with tubes		
Exposure unit	Article-no.	Type
BG 35/50 and 501	821 209 663	BASF-Nyloprint or Sylvania F20 W/350 BL
BG 25/30 and 351	821 209 664	
BG 35/100	821 209 672	LT 36 W/010R UV

Dispersion light film	
Exposure unit	Article-no.
BG 35/50	90 00 35
BG 501	89 01 12
BG 25/30	90 00 40
BG 351	89 01 17
BG 35/100	90 00 36

 **Teca-Print**

Teca-Print AG      Tel. +41 (0)52 645 2000  
 Postfach          Fax +41 (0)52 645 2102  
 Bohlstrasse 17      info@teca-print.ch  
 CH-8240 Thayngen      www.teca-print.com